

Pignoni in ghisa G20 UNI 5007

3/8" x 7/32"

9,525 x 5,72 mm

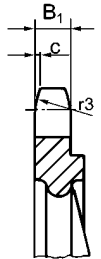
06B 1 - 2 - 3

DIN 8187 ISO/R 606

PIGNONE		mm
Raggio dente r_3	10	
Larghezza raggio C	1	
Largh. dente pign. B_1	5,3	
Largh. dente pign. b_1	5,2	
Largh. dente pign. B_2	15,4	
Largh. dente pign. B_3	25,6	

CATENA		mm
Passo	9,525	
Largh. interna	5,72	
Rullo - \emptyset	6,35	

z	d_e	d_p	S			D			T		
			d_m	D_1	A	d_m	D_2	A	d_m	D_3	A
38	119,5	115,35	70	19	32	80	19	40	90	23	56
45	140,7	136,55	70	19	32	80	19	40	90	23	56
57	176,9	172,91	70	19	32	80	19	40	90	23	56
76	234,9	230,49	70	19	32	80	19	40	100	23	56
95	292,5	288,08	80	19	40	90	19	45	100	23	56
114	349,6	345,68	80	19	40	90	19	45	100	23	56
150	459,2	454,82	90	23	45	100	23	50	125	23	60



1/2" x 5/16"

12,7 x 7,75 mm

08B 1 - 2 - 3

DIN 8187 ISO/R 606

PIGNONE		mm
Raggio dente r_3	13	
Larghezza raggio C	1,3	
Largh. dente pign. B_1	7,2	
Largh. dente pign. b_1	7	
Largh. dente pign. B_2	21	
Largh. dente pign. B_3	34,9	

CATENA		mm
Passo	12,7	
Largh. interna	7,75	
Rullo - \emptyset	8,51	

z	d_e	d_p	S			D			T		
			d_m	D_1	A	d_m	D_2	A	d_m	D_3	A
38	158,6	153,80	70	19	40	90	23	50	100	23	60
45	188,0	182,07	70	19	40	90	23	50	100	23	60
57	236,4	230,54	70	19	40	90	23	50	100	23	60
76	313,3	307,33	80	23	40	100	23	56	100	23	60
95	390,1	384,11	80	23	45	100	23	56	120	23	67
114	466,9	460,90	90	23	45	100	23	63	120	23	67

5/8" x 3/8"

15,875 x 9,65 mm

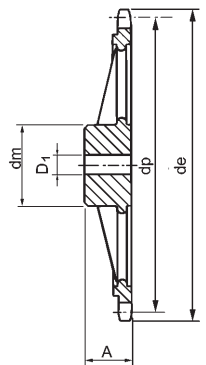
10B 1 - 2 - 3

DIN 8187 ISO/R 606

PIGNONE		mm
Raggio dente r_3	16	
Larghezza raggio C	1,6	
Largh. dente pign. B_1	9,1	
Largh. dente pign. b_1	9	
Largh. dente pign. B_2	25,5	
Largh. dente pign. B_3	42,1	

CATENA		mm
Passo	15,875	
Largh. interna	9,65	
Rullo - \emptyset	10,16	

z	d_e	d_p	S			D			T		
			d_m	D_1	A	d_m	D_2	A	d_m	D_3	A
38	199,2	192,24	80	19	40	100	29	50	100	31	60
45	235,0	227,58	80	19	40	100	29	50	100	31	60
57	296,0	288,18	90	23	45	100	29	56	100	31	63
76	392,1	384,16	90	23	50	100	29	63	110	34	67
95	488,5	480,14	100	23	56	110	29	63	125	34	70
114	584,1	576,13	100	23	56	125	29	70	125	34	80



3/4" x 7/16"

19,05 x 11,68 mm

12B - 1 - 2 - 3

DIN 8187 ISO/R 606

PIGNONE		mm
Raggio dente r_3	19	
Larghezza raggio C	2	
Largh. dente pign. B_1	11,1	
Largh. dente pign. b_1	10,8	
Largh. dente pign. B_2	30,3	
Largh. dente pign. B_3	49,8	

CATENA		mm
Passo	19,05	
Largh. interna	11,68	
Rullo - \emptyset	12,07	

z	d_e	d_p	S			D			T		
			d_m	D_1	A	d_m	D_2	A	d_m	D_3	A
38	239,0	230,69	100	23	56	110	29	63	140	31	70
45	282,5	273,10	100	23	56	110	29	63	140	31	70
57	354,0	345,81	100	29	56	120	29	63	140	39	70
76	469,9	460,99	100	29	56	135	29	63	160	39	75
95	585,1	576,17	100	29	65	135	29	70	170	39	82
114	700,6	691,36	100	29	65	135	44	70	170	49	82

Pignoni in ghisa G20 UNI 5007

1" x 17,02 mm

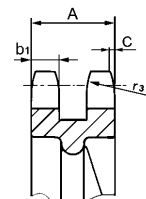
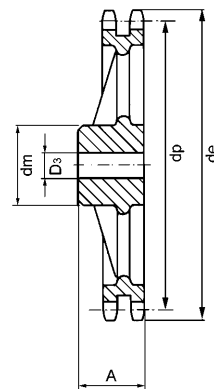
25,4 x 17,02 mm
16B 1 - 2 - 3

DIN 8187 ISO/R 606

PIGNONE	mm
Raggio dente r_3	26
Larghezza raggio C	2,5
Largh. dente pign. B_1	16,2
Largh. dente pign. b_1	15,8
Largh. dente pign. B_2	47,7
Largh. dente pign. B_3	79,6

CATENA	mm
Passo	25,4
Largh. interna	17,02
Rullo - \emptyset	15,88

z	d_e	d_p	S			D			T		
			d_m	D_1	A	d_m	D_2	A	d_m	D_3	A
30	254,0	243,00	110	29	65	125	39	75	145	39	90
38	320,0	307,59	110	29	65	140	39	75	160	44	100
45	377,0	364,13	125	29	70	148	39	75	160	44	100
57	474,0	461,08	125	34	70	160	39	90	165	44	100
76	627,0	614,65	140	34	80	175	39	95	200	44	110
95	781,0	768,22	140	39	80	175	44	95	200	49	110
114	933,0	921,81	150	39	80	175	44	95	200	49	115



1" 1/4 x 3/4"

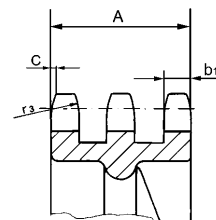
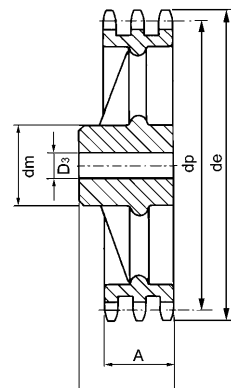
31,75 x 19,56 mm
20B 1 - 2 - 3

DIN 8187 ISO/R 606

PIGNONE	mm
Raggio dente r_3	32
Larghezza raggio C	3,5
Largh. dente pign. B_1	18,5
Largh. dente pign. b_1	18,2
Largh. dente pign. B_2	54,6
Largh. dente pign. B_3	91

CATENA	mm
Passo	31,75
Largh. interna	19,56
Rullo - \emptyset	19,05

z	d_e	d_p	S			D			T		
			d_m	D_1	A	d_m	D_2	A	d_m	D_3	A
30	318,9	303,75	115	34	70	130	39	80	170	55	110
38	399,6	384,49	125	34	70	140	44	90	170	55	110
45	470,3	455,17	125	34	70	140	44	90	180	62	125
57	591,5	576,36	135	39	80	160	49	100	180	62	125
76	783,5	768,32	140	49	90	180	55	100			



1" 1/2 x 1"

38,1 x 25,4 mm
24B 1 - 2 - 3

DIN 8187 ISO/R 606

PIGNONE	mm
Raggio dente r_3	38
Larghezza raggio C	4
Largh. dente pign. B_1	24,1
Largh. dente pign. b_1	23,6
Largh. dente pign. B_2	72
Largh. dente pign. B_3	120,3

CATENA	mm
Passo	38,1
Largh. interna	25,4
Rullo - \emptyset	25,4

z	d_e	d_p	S			D			T		
			d_m	D_1	A	d_m	D_2	A	d_m	D_3	A
30	379,5	364,50	130	39	85	180	44	100	200	62	150
38	476,2	461,39	140	44	90	180	44	100	200	62	150
45	561,2	546,20	140	44	90	200	54	110	200	62	150
57	706,5	691,63	160	44	100	200	54	110	250	69	150
76	936,9	921,98	170	44	100	220	54	120	250	69	150