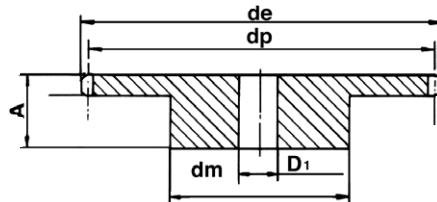


Pignoni semplici inox

**ACCIAIO INOX
AISI 304 L**

per catene a rulli
secondo DIN 8187 ISO/R 606



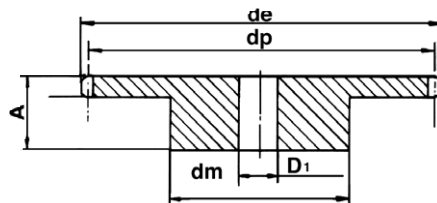
	Z	12	13	15	16	17	18	19	20	21	23	25	30
3/8" x 7/32"	de	-	43,0	49,3	52,3	55,3	58,3	61,3	64,3	68,0	73,5	80,0	94,7
	dp	-	39,79	45,81	48,82	51,83	54,85	57,87	60,89	63,91	69,95	76,00	91,12
	dm	-	28	34	37	40	43	45	46	48	52	57	60
	D1	-	10	10	10	10	10	10	10	10	12	12	12
	A	-	25	25	28	28	28	28	28	28	28	28	30
1/2" x 5/16"	de	53,0	57,9	65,9	69,9	74,0	78,0	82,0	86,0	90,1	98,1	106,2	126,3
	dp	49,07	53,6	61,09	65,10	69,11	73,14	77,16	81,19	85,22	93,27	101,33	121,50
	dm	33	37	45	50	52	56	60	64	68	70	70	80
	D1	10	10	10	12	12	12	12	12	14	14	14	16
	A	28	28	28	28	28	28	28	28	28	28	28	30
5/8" x 3/8"	de	-	73,0	83,0	88,0	93,0	98,3	103,3	108,4	113,4	123,4	134,0	158,8
	dp	-	66,32	76,36	81,37	86,39	91,42	96,45	101,49	106,52	116,58	126,66	151,87
	dm	-	47	57	60	60	70	75	75	80	80	80	90
	D1	-	12	12	12	12	12	14	14	16	16	16	20
	A	-	30	30	30	30	30	30	30	30	30	30	35
3/4" x 7/16"	de	-	87,5	99,8	105,5	111,5	118,0	124,2	129,7	136,0	149,0	160,0	-
	dp	-	79,59	91,63	97,65	103,67	109,71	115,75	121,78	127,82	139,90	152,0	-
	dm	-	58	70	75	80	80	80	80	90	90	90	-
	D1	-	16	16	16	16	16	16	16	20	20	20	-
	A	-	35	35	35	35	35	35	35	40	40	40	-
1" x 17,02	de	-	117,0	133,0	141,0	149,0	157,0	165,2	173,0	181,2	-	-	-
	dp	-	106,12	122,17	130,20	138,22	146,28	154,33	162,38	170,43	-	-	-
	dm	-	78	92	100	100	100	100	100	110	-	-	-
	D1	-	16	16	19	20	20	20	20	20	-	-	-
	A	-	40	40	45	45	45	45	45	50	-	-	-

adattare i dati pag 26

Pignoni semplici con denti temprati ad induzione

Durezza: HRC 45-53 prof. 0,6-1 mm

per catene a rulli
secondo DIN 8187 ISO/R 606
materiale: C43 UNI 7847



	z	13	14	15	16	17	18	19	20	21	23	25	27	30
3/8" x 7/32"	de	43,0	-	49,3	52,3	55,3	58,3	61,3	64,3	68,0	73,5	80,0	86,0	94,7
	dp	39,79	-	45,81	48,82	51,83	54,85	57,87	60,89	63,91	69,95	76,00	82,05	91,12
	dm	28	-	34	37	40	43	45	46	48	52	57	60	60
	D1	10	-	10	10	10	10	10	10	10	12	12	12	12
	A	25	-	25	28	28	28	28	28	28	28	28	28	28
1/2" x 5/16"	de	57,4	61,8	65,9	69,9	74,0	78,0	82,0	86,0	90,1	98,1	106,2	114,0	126,3
	dp	53,6	57,07	61,09	65,10	69,11	73,14	77,16	81,19	85,22	93,27	101,33	109,4	121,50
	dm	37	41	45	50	52	56	60	64	68	70	70	70	80
	D1	10	10	10	12	12	12	12	12	14	14	14	16	16
	A	28	28	28	28	28	28	28	28	28	28	28	30	30
5/8" x 3/8"	de	73,0	-	83,0	88,0	93,0	98,3	103,3	108,4	113,4	123,4	134,0	-	-
	dp	66,32	-	76,36	81,37	86,39	91,42	96,45	101,49	106,52	116,58	126,66	-	-
	dm	47	-	57	60	60	70	75	75	80	80	80	-	-
	D1	12	-	12	12	12	12	14	14	16	16	16	-	-
	A	30	-	30	30	30	30	30	30	30	30	30	-	-
3/4" x 7/16"	de	87,5	-	99,8	105,5	111,5	118,0	124,2	129,7	136,0	149,0	160,0	-	-
	dp	79,59	-	91,63	97,65	103,67	109,71	115,75	121,78	127,82	139,90	152,0	-	-
	dm	58	-	70	75	80	80	80	80	90	90	90	-	-
	D1	14	-	16	16	16	16	16	16	20	20	20	-	-
	A	35	-	35	35	35	35	35	35	40	40	40	-	-
1" x 17,02	de	117,0	-	133,0	141,0	149,0	157,0	165,2	173,0	181,2	-	-	-	-
	dp	106,12	-	122,17	130,20	138,22	146,28	154,33	162,38	170,43	-	-	-	-
	dm	78	-	92	100	100	100	100	100	110	-	-	-	-
	D1	16	-	16	19	20	20	20	20	20	-	-	-	-
	A	40	-	40	45	45	45	45	45	50	-	-	-	-